

2401 S.E. Tones Drive, Suite 17  
P.O. Box 187  
Ankeny, IA 50021  
Phone: 515-964-1587  
Fax: 515-964-8749

[www.dennyelwellcompany.com](http://www.dennyelwellcompany.com)



**DENNY ELWELL COMPANY**

Commercial Real Estate Services

## **FOR LEASE**

# **7,136 SF Freestanding Building on 3 Acres**

## **1509 South Ankeny Blvd., Ankeny, IA**



***Property Owned by: Elwell, Inc***



- High Traffic on Ankeny Blvd.
- Across from Ankeny's new High School
- Near DMACC
- Ample Parking
- Auto/RV Dealership, Service/Retail Business, Restaurant or Office Use
- Affordable Lease Rates
- Zoned C-2— General Commercial

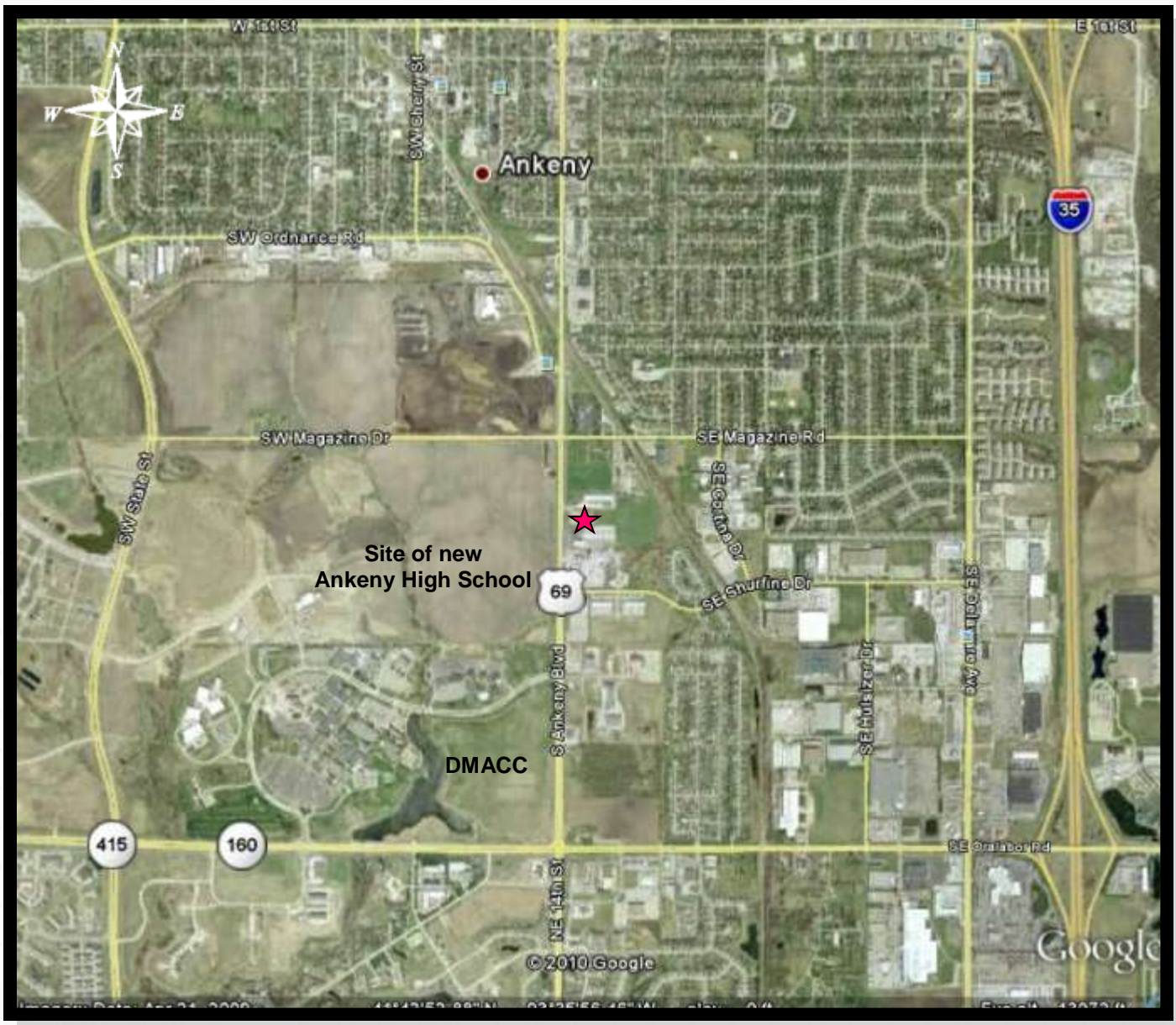
Contact our Sales and Leasing Department  
**515-964-1587**

All information is subject to errors, omissions, change in price, rental, prior sale and withdrawal without notice.

Licensed in the State of Iowa



**DENNY ELWELL COMPANY**  
Commercial Real Estate Services



2401 S.E. Tones Drive, Suite 17  
P.O. Box 187  
Ankeny, IA 50021  
Phone: 515-964-1587  
Fax: 515-964-8749

[www.dennyelwellcompany.com](http://www.dennyelwellcompany.com)