

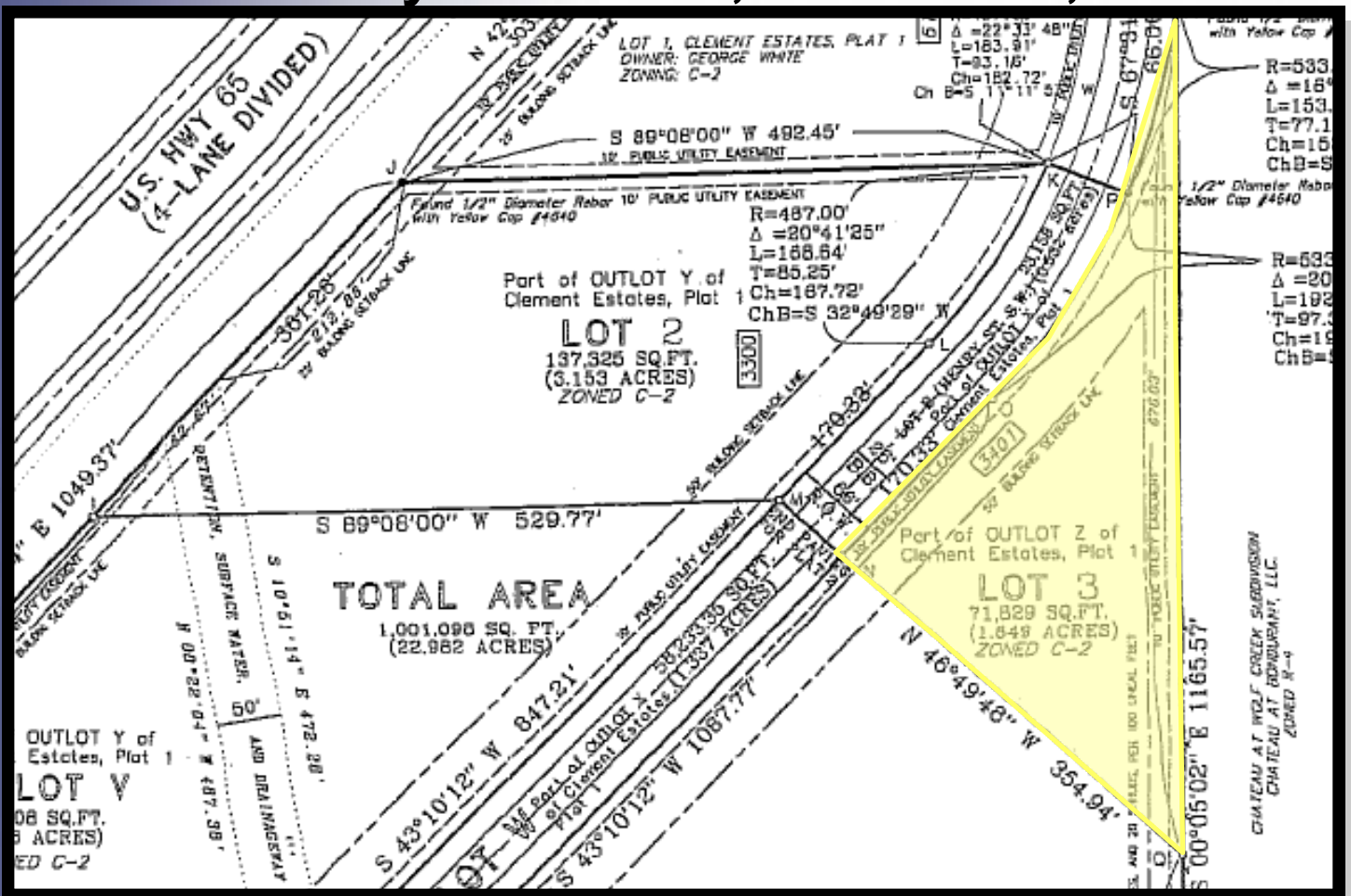
2401 S.E. Tones Drive, Suite 17
P.O. Box 187
Ankeny, IA 50021
Phone: 515-964-1587
Fax: 515-964-8749



DENNY ELWELL COMPANY
Commercial Real Estate Services

www.dennyelwellcompany.com

For Sale— 1.65 Acres (71,829 SF) 3401 Henry Street SW, Bondurant, Iowa



Property Owned by: **B.I.G. LC**

- Direct Access & Visibility to Hwy 65
- Zoned C-2, General Business Use
- Shared Detention Area
- Within Diagonal Business Park
- Directly North of Ziegler Cat
- All Utilities Available for Connection
- Close Proximity to Altoona, Bondurant & Ankeny
- 200' of frontage on Industrial City St.

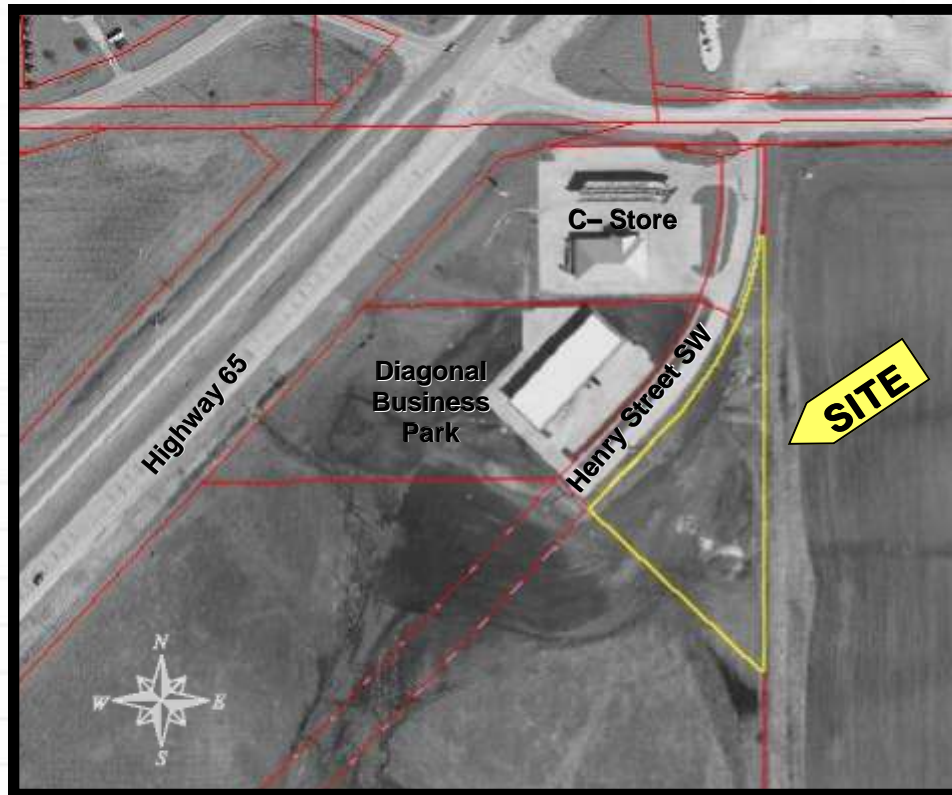
Contact our Sales and Leasing Department
515-964-1587

All information is subject to errors, omissions, change in price, rental, prior sale and withdrawal without notice.



DENNY ELWELL COMPANY

Commercial Real Estate Services



2401 S.E. Tones Drive, Suite 17
P.O. Box 187
Ankeny, IA 50021
Phone: 515-964-1587
Fax: 515-964-8749

www.dennyelwellcompany.com