

2401 S.E. Tones Drive, Suite 17

P.O. Box 187

Ankeny, IA 50021

Phone: 515-964-1587

Fax: 515-964-8749

[www.dennyelwellcompany.com](http://www.dennyelwellcompany.com)



**DENNY ELWELL COMPANY**

Commercial Real Estate Services

## FOR SALE 15,700 SF Flex Buildings on 2.7 Acres 6550 NE 14th Street, Des Moines, IA



**Price  
Reduced**



- Outdoor Storage Available
- Zoned Light Industrial
- Easy Access to I-35/I-80
- 4,000 SF Finished Office Space
- 10 Drive-In Doors
- Wash Bays, Drains, Heated Warehouse
- Located in Unincorporated Polk County between Des Moines and Ankeny

Contact our Sales and Leasing Department

**515-964-1587**

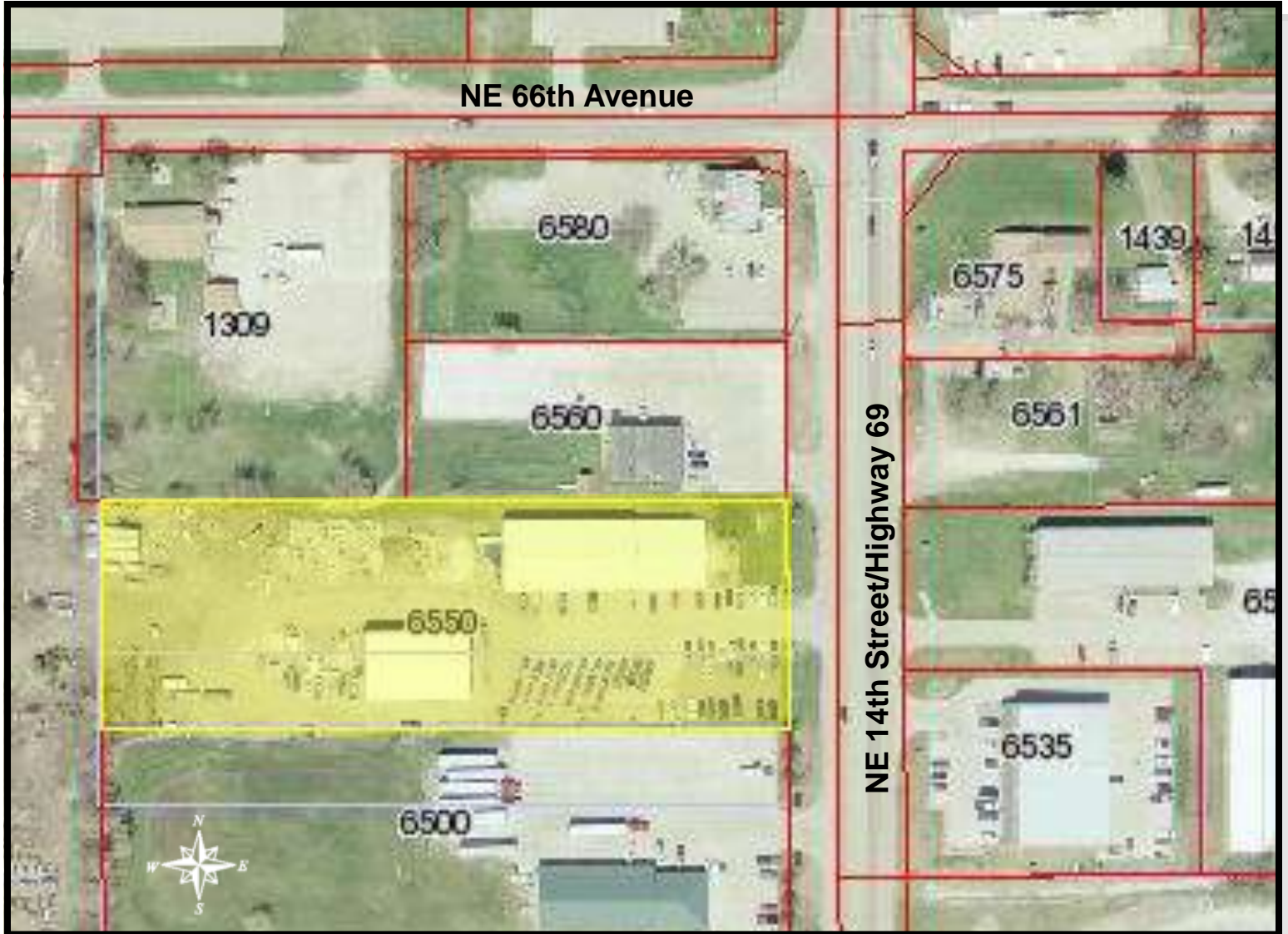
Licensed in the State of Iowa

All information is subject to errors, omissions, change in price, rental, prior sale and withdrawal without notice.



**DENNY ELWELL COMPANY**

Commercial Real Estate Services



2401 S.E. Tones Drive, Suite 17

P.O. Box 187

Ankeny, IA 50021

Phone: 515-964-1587

Fax: 515-964-8749

[www.dennyelwellcompany.com](http://www.dennyelwellcompany.com)