

2401 S.E. Tones Drive, Suite 17
P.O. Box 187
Ankeny, IA 50021
Phone: 515-964-1587
Fax: 515-964-8749

www.dennyelwellcompany.com



DENNY ELWELL COMPANY

Commercial Real Estate Services

Development Ground Available I-35 & Delaware Avenue, Polk County



Property Owned by: Denny Elwell Family, LC

31.19 Acres

- Located in Unincorporated Polk County
- Zoned General Business (Heavy Zoning)
- All City utilities available
- Will Divide– 10 acres minimum
- Excellent Visibility on Interstate 35 and Delaware Avenue
- Traffic Count = 66,000 cars per day

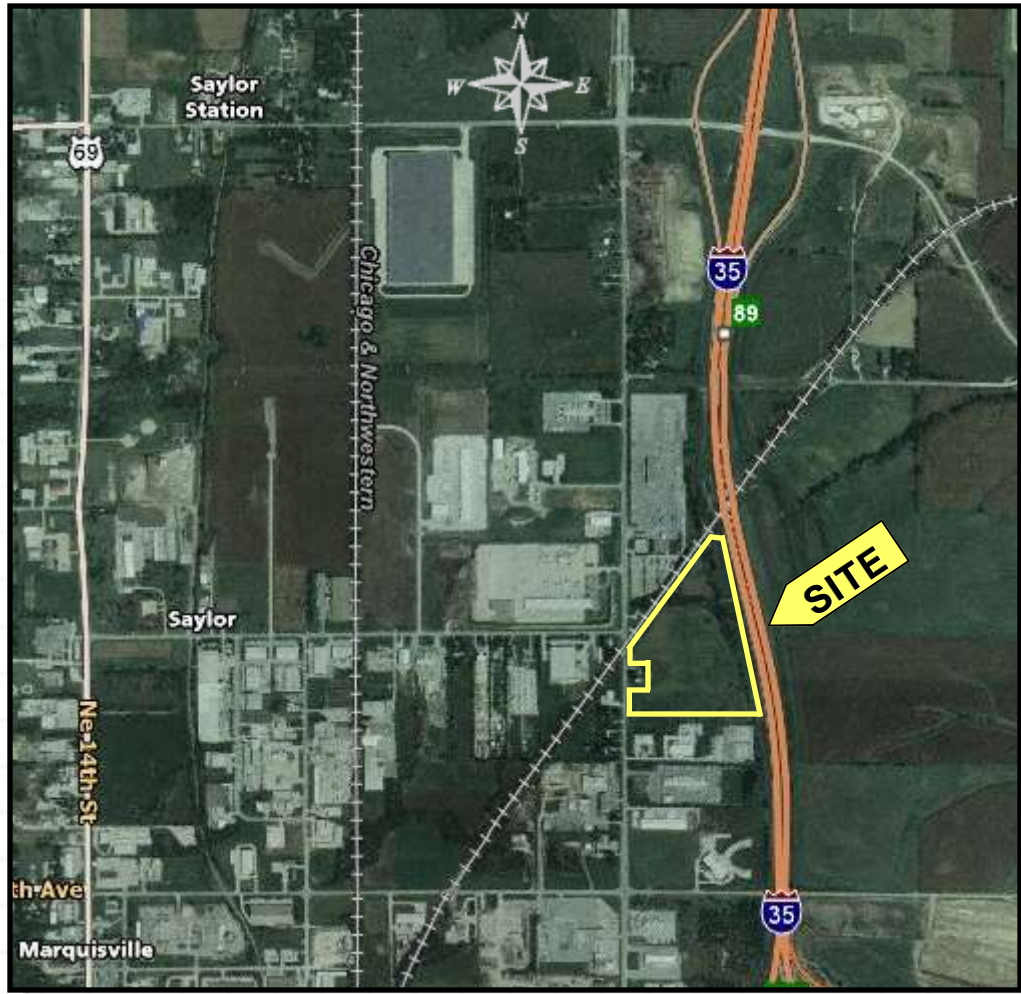
Contact our Sales and Leasing Department
515-964-1587

All information is subject to errors, omissions, change in price, rental, prior sale and withdrawal without notice.

Licensed in the State of Iowa



DENNY ELWELL COMPANY
Commercial Real Estate Services



2401 S.E. Tones Drive, Suite 17
P.O. Box 187
Ankeny, IA 50021
Phone: 515-964-1587
Fax: 515-964-8749

www.dennyelwellcompany.com