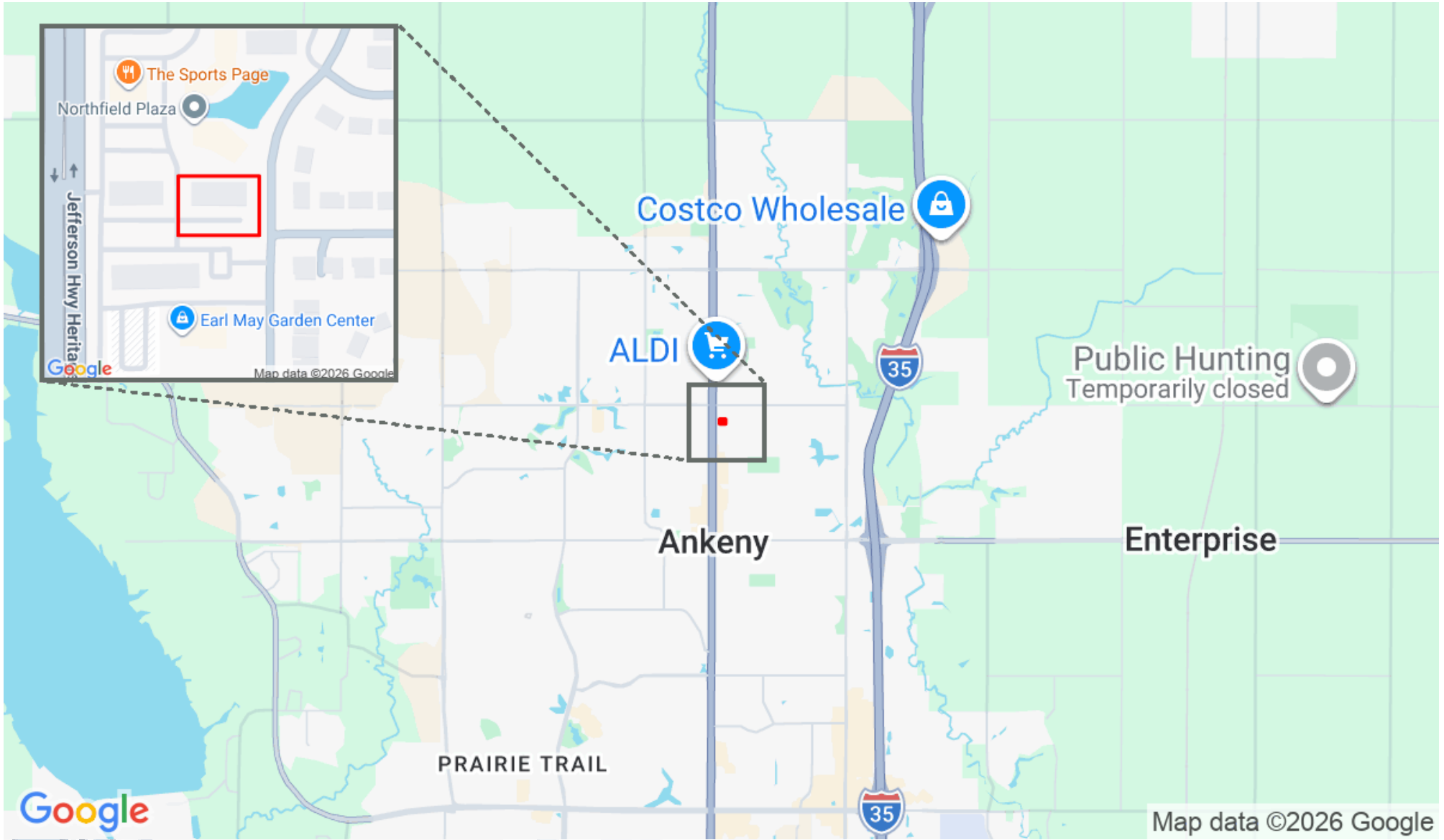


1601 N Ankeny Blvd



Denny Elwell Company

2401 SE Tones Dr, Suite 17 Ankeny, IA 50021 | 515-964-1587



Steve Canon
scanon@dennyelwellcompany.com
515-229-7612

MOODY'S
ANALYTICS

Catylist

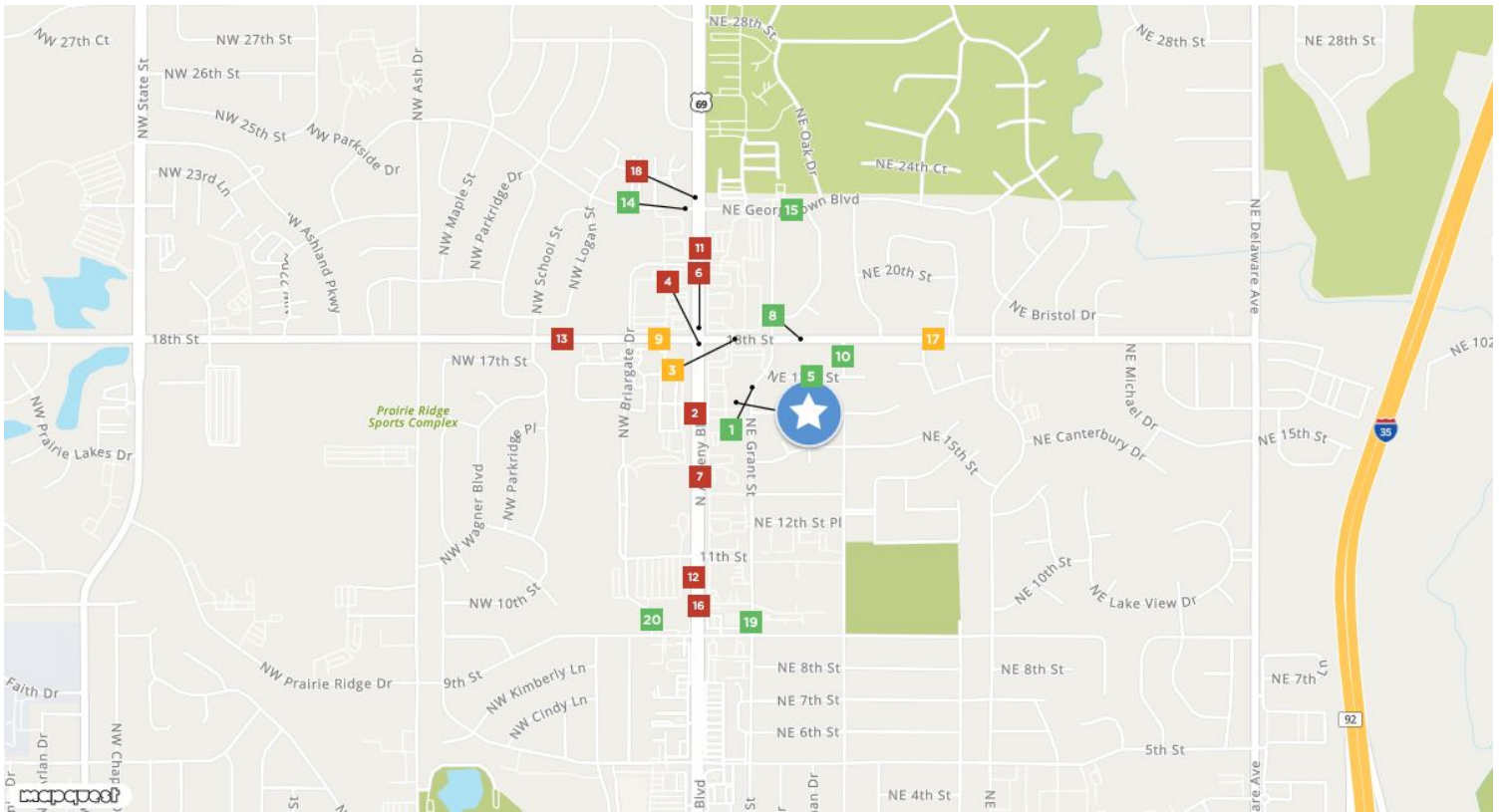
1601 N Ankeny Blvd



Denny Elwell Company

2401 SE Tones Dr, Suite 17 Ankeny, IA 50021 | 515-964-1587

Traffic Counts



NE Grant St 1 NE 17th St Year: 1999 925	North Ankeny Boulevard 2 NW Logan St Year: 2022 14,800 Year: 2014 14,400 Year: 2013 14,400	NE 18th St 3 NE Grant St Year: 2012 7,800 Year: 2009 7,410 Year: 2008 7,800	US 69 4 NE 102nd Ave Year: 2022 14,800	NE 17th St 5 NE Sherman Ct Year: 1998 250
North Ankeny Boulevard 6 NW 20th St Year: 2022 12,300 Year: 2016 15,320 Year: 2013 10,100	North Ankeny Boulevard 7 NW Logan St Year: 2022 14,800 Year: 2020 7,657 Year: 2018 14,500	NE 18th St 8 NE Grant St Year: 2001 3,575	NW 18th St 9 NW Briargate Dr Year: 2012 7,900 Year: 2009 8,945 Year: 2008 8,200	NE Crestmoor Pl 10 NE 18th St Year: 1998 350
North Ankeny Boulevard 11 NW 20th St Year: 2022 12,300 Year: 2001 8,408 Year: 2001 8,400	US 69 12 NE 11th St Year: 2022 14,800	NW 18th St 13 NW Briargate Dr Year: 2015 10,510 Year: 2011 8,535 Year: 2008 6,000	NW Georgetown Blvd 14 NE Georgetown Blvd Year: 2015 1,990 Year: 2011 1,905 Year: 2009 1,705	NE Georgetown Blvd 15 NE Grant St Year: 2015 1,310 Year: 2011 1,155 Year: 2009 1,175
North Ankeny Boulevard 16 NE 9th St Year: 2022 14,800 Year: 2013 14,400 Year: 2011 13,700	NE 18th St 17 Cortina Dr Year: 2013 6,190	US 69 18 NE Georgetown Blvd Year: 2022 12,300	NE Grant St 19 NE 9th St Year: 2003 2,650	NW Logan St 20 NW 9th St Year: 2010 1,089



Steve Canon
 scanon@dennyelwellcompany.com
 515-229-7612



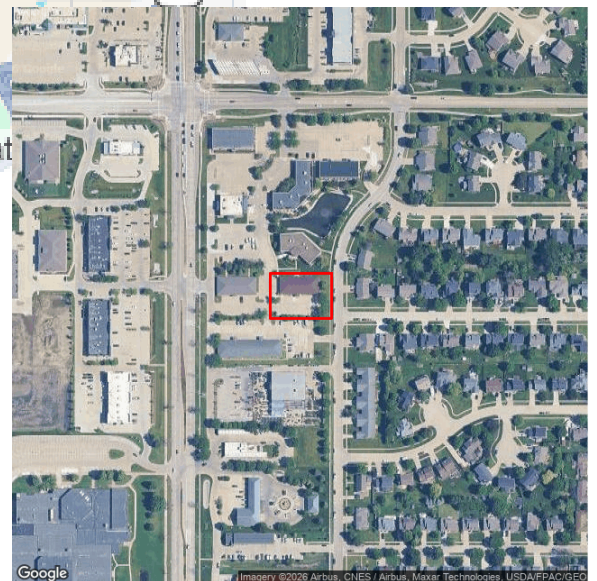
1601 N Ankeny Blvd



Denny Elwell Company

2401 SE Tones Dr, Suite 17 Ankeny, IA 50021 | 515-964-1587

Demographic Report



1601 N Ankeny Blvd

Population

Distance	Male	Female	Total
1- Mile	3,639	3,799	7,437
3- Mile	16,609	17,596	34,205
5- Mile	24,984	26,076	51,060

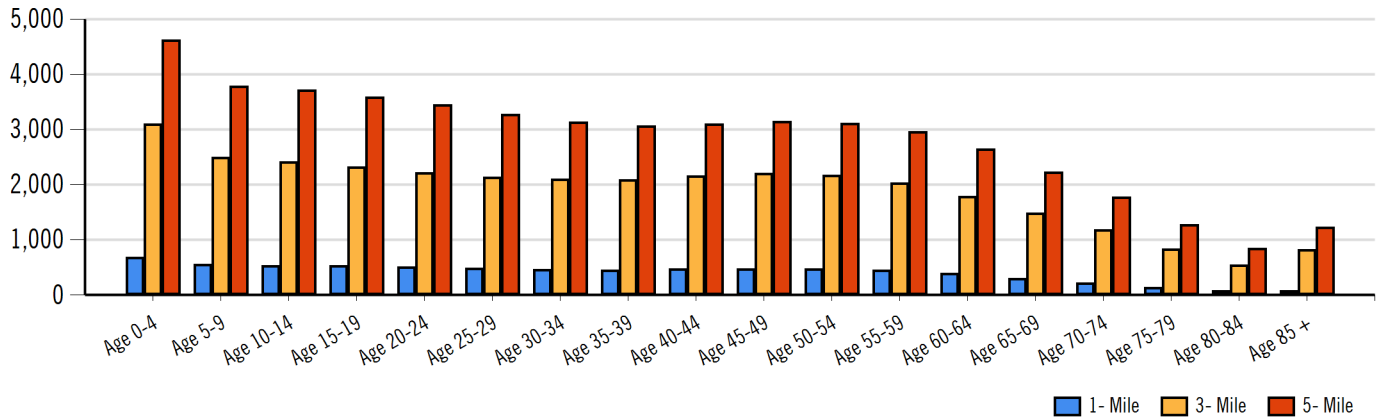


Steve Canon
scanon@dennyelwellcompany.com
515-229-7612

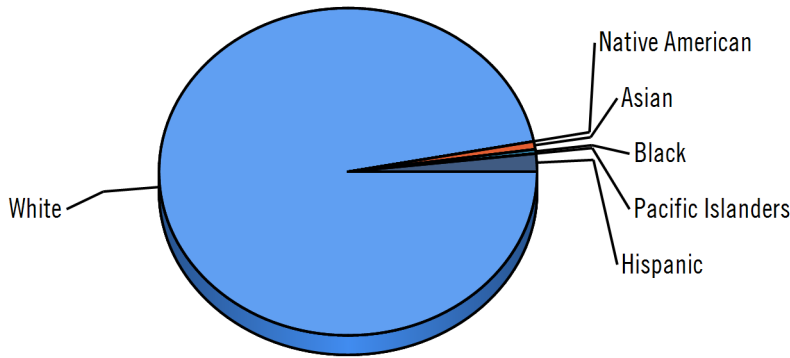
MOODY'S
ANALYTICS

Catylist

Population by Distance and Age (2020)

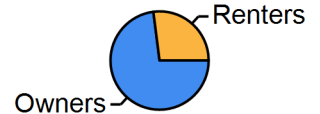


Ethnicity within 5 miles



■ White
 ■ Native American
 ■ Asian
 ■ Black
 ■ Pacific Islanders
 ■ Hispanic

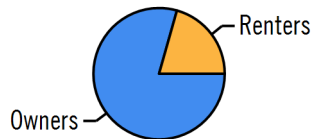
Home Ownership 1 Mile



Home Ownership 3 Mile



Home Ownership 5 Mile



Employment by Distance

Distance	Employed	Unemployed	Unemployment Rate
1-Mile	4,246	103	1.11 %
3-Mile	19,143	432	1.81 %
5-Mile	28,832	607	1.72 %

1601 N Ankeny Blvd



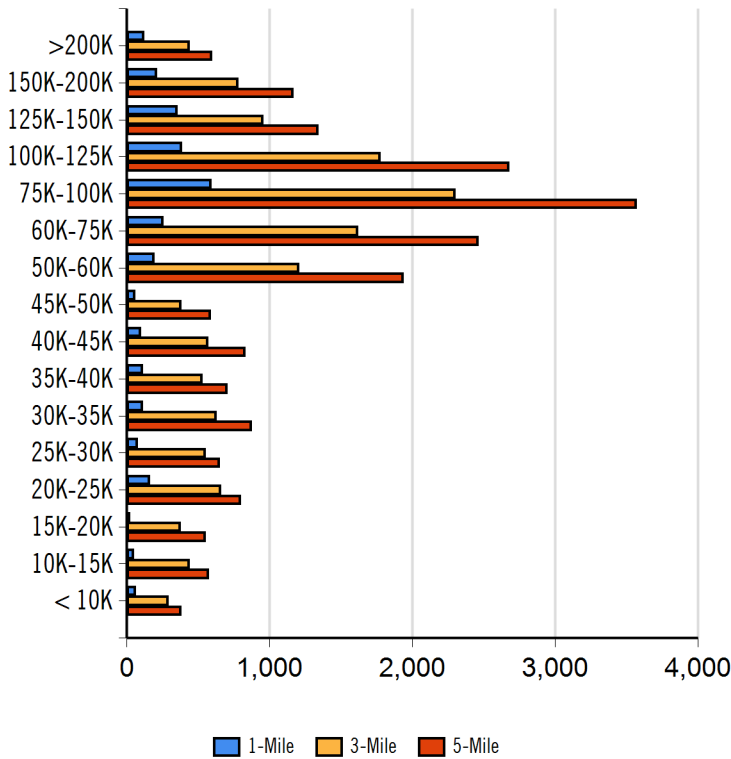
Denny Elwell Company

2401 SE Tones Dr, Suite 17 Ankeny, IA 50021 | 515-964-1587

Labor & Income

	Agriculture	Mining	Construction	Manufacturing	Wholesale	Retail	Transportation	Information	Professional	Utility	Hospitality	Pub-Admin	Other
1-Mile	152	0	145	317	166	365	118	133	290	1,339	216	193	156
3-Mile	332	1	966	1,494	739	2,016	640	571	1,554	5,011	1,211	840	917
5-Mile	392	6	1,590	2,142	1,059	3,255	968	865	2,431	7,416	1,704	1,143	1,451

Household Income



Radius	Median Household Income
1-Mile	\$87,451.67
3-Mile	\$74,293.74
5-Mile	\$76,155.38

Radius	Average Household Income
1-Mile	\$86,732.17
3-Mile	\$77,933.53
5-Mile	\$80,064.21

Radius	Aggregate Household Income
1-Mile	\$260,054,059.72
3-Mile	\$1,079,920,325.70
5-Mile	\$1,599,961,402.62

Education

	1-Mile	3-mile	5-mile
Pop > 25	4,582	21,621	31,866
High School Grad	884	4,823	7,352
Some College	968	5,035	7,599
Associates	477	2,250	3,385
Bachelors	1,445	6,263	8,555
Masters	430	1,588	2,346
Prof. Degree	134	471	705
Doctorate	75	168	203

Tapestry

	1-Mile	3-mile	5-mile
Vacant Ready For Rent	19 %	52 %	54 %
Teen's	46 %	83 %	86 %
Expensive Homes	0 %	0 %	0 %
Mobile Homes	0 %	17 %	45 %
New Homes	116 %	109 %	144 %
New Households	62 %	103 %	97 %
Military Households	1 %	5 %	22 %
Households with 4+ Cars	51 %	92 %	111 %
Public Transportation Users	17 %	29 %	28 %
Young Wealthy Households	7 %	73 %	96 %

This Tapestry information compares this selected market against the average. If a tapestry is over 100% it is above average for that statistic. If a tapestry is under 100% it is below average.



Steve Canon
scanon@dennyelwellcompany.com
515-229-7612



Expenditures

	1-Mile	%	3-Mile	%	5-Mile	%
Total Expenditures	158,738,396		697,934,607		1,025,703,953	
Average annual household	55,125		51,510		52,417	
Food	7,067	12.82 %	6,646	12.90 %	6,748	12.87 %
Food at home	4,501		4,289		4,336	
Cereals and bakery products	641		610		617	
Cereals and cereal products	227		217		219	
Bakery products	413		392		397	
Meats poultry fish and eggs	871		839		846	
Beef	201		193		195	
Pork	156		152		153	
Poultry	162		157		158	
Fish and seafood	142		135		137	
Eggs	72		69		70	
Dairy products	464		436		442	
Fruits and vegetables	923		877		889	
Fresh fruits	136		130		132	
Processed vegetables	172		166		168	
Sugar and other sweets	166		158		159	
Fats and oils	143		136		137	
Miscellaneous foods	851		811		820	
Nonalcoholic beverages	378		363		366	
Food away from home	2,566		2,357		2,411	
Alcoholic beverages	419		381		391	
Housing	19,302	35.01 %	18,326	35.58 %	18,582	35.45 %
Shelter	11,663		11,069		11,231	
Owned dwellings	7,327		6,805		6,956	
Mortgage interest and charges	3,821		3,496		3,587	
Property taxes	2,456		2,271		2,319	
Maintenance repairs	1,049		1,037		1,048	
Rented dwellings	3,330		3,362		3,349	
Other lodging	1,004		900		925	
Utilities fuels	4,395		4,255		4,295	
Natural gas	422		399		404	
Electricity	1,711		1,676		1,687	
Fuel oil	173		166		168	
Telephone services	1,383		1,336		1,350	
Water and other public services	705		676		684	
Household operations	1,382	2.51 %	1,278	2.48 %	1,302	2.48 %
Personal services	434		386		395	
Other household expenses	947		891		906	
Housekeeping supplies	644		606		613	
Laundry and cleaning supplies	175		166		167	
Other household products	381		356		360	
Postage and stationery	87		84		85	
Household furnishings	1,216		1,117		1,140	
Household textiles	90		83		84	
Furniture	280		245		251	
Floor coverings	30		28		29	
Major appliances	145		146		148	
Small appliances	92		87		88	
Miscellaneous	578		525		536	
Apparel and services	1,505	2.73 %	1,367	2.65 %	1,387	2.65 %
Men and boys	315		274		278	
Men 16 and over	269		231		236	
Boys 2 to 15	46		42		42	
Women and girls	513		482		489	



Steve Canon
scanon@dennyelwellcompany.com
515-229-7612



1601 N Ankeny Blvd



Denny Elwell Company		2401 SE Tones Dr, Suite 17 Ankeny, IA 50021 515-964-1587	
Women 16 and over	434	405	412
Girls 2 to 15	79	76	76
Children under 2	95	91	91

Expenditures (Continued)

	1-Mile	%	3-Mile	%	5-Mile	%
Total Expenditures	158,738,396		697,934,607		1,025,703,953	
Average annual household	55,125		51,510		52,417	
Transportation	7,583	13.76 %	7,114	13.81 %	7,238	13.81 %
Vehicle purchases	1,904		1,730		1,771	
Cars and trucks new	961		888		912	
Cars and trucks used	890		794		809	
Gasoline and motor oil	2,311		2,218		2,246	
Other vehicle expenses	2,809		2,662		2,703	
Vehicle finance charges	199		187		191	
Maintenance and repairs	981		924		940	
Vehicle insurance	1,254		1,208		1,221	
Vehicle rental leases	373		342		349	
Public transportation	557		503		517	
Health care	4,163	7.55 %	3,986	7.74 %	4,043	7.71 %
Health insurance	2,677		2,582		2,613	
Medical services	928		870		888	
Drugs	421		404		411	
Medical supplies	136		128		130	
Entertainment	3,342	6.06 %	3,111	6.04 %	3,170	6.05 %
Fees and admissions	680		605		625	
Television radios	1,111		1,072		1,083	
Pets toys	1,218		1,133		1,155	
Personal care products	722		667		679	
Reading	59		56		56	
Education	1,479		1,289		1,321	
Tobacco products	394		399		399	
Miscellaneous	849	1.54 %	809	1.57 %	825	1.57 %
Cash contributions	1,416		1,361		1,381	
Personal insurance	6,820		5,990		6,189	
Life and other personal insurance	196		182		186	
Pensions and Social Security	6,624		5,808		6,002	

Distance	Year	Estimated Households			Housing Occupied By		Housing Occupancy		
		Projection	2018	Change	1 Person	Family	Owner	Renter	Vacant
1-Mile	2020	9,622	7,055	32.69 %	1,801	7,077	7,614	2,008	-165
3-Mile	2020	20,895	15,923	29.53 %	4,755	14,441	15,952	4,943	228
5-Mile	2020	27,566	20,820	29.53 %	5,777	19,751	21,912	5,654	665
1-Mile	2023	8,948	7,055	24.19 %	1,679	6,577	7,394	1,554	944
3-Mile	2023	19,341	15,923	20.24 %	4,405	13,364	15,443	3,898	2,858
5-Mile	2023	25,429	20,820	19.93 %	5,337	18,211	21,088	4,341	3,968



Steve Canon
scanon@dennyelwellcompany.com
515-229-7612

